

## DA 370

*Exhaust square diffusers with perforated plate*

Product	DA 370
Construction material	Steel
Finishing	RAL 9010

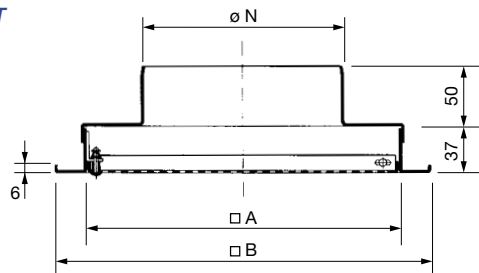
Exhaust units DA 370 are exactly like the DA 370 diffusers, but they do not have internal air intake deflectors. They are used to keep a uniform design on the ceiling, without having to use grids for wall exhaust.

DA 360 diffusers and DA 370 exhaust elements are in steel sheet, with white stove enamel (RAL 9010); the deflectors of the DB 360 units are black (RAL 9005)

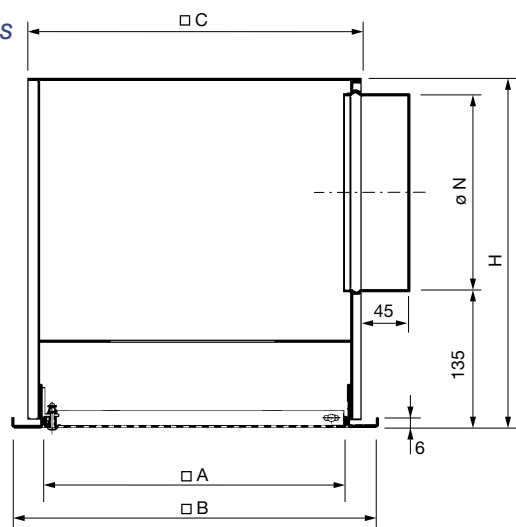
**Installation** DA 370 diffusers are installed by using the side screws on the neck of the diffusers. A very simple and quick operation.

### Size

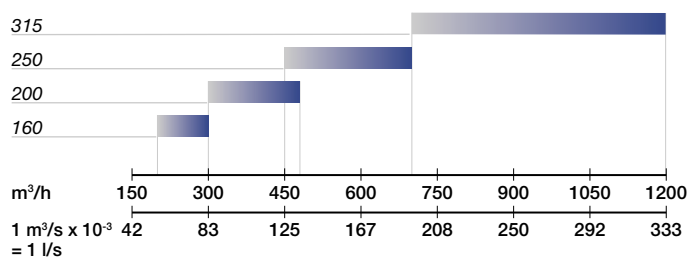
#### DA 370 T



#### DA 370 S



### Quick selection



	Q min.	Q max
NR	< 25	< 35
Pressure drop Pa	< 10	< 30

The air flow rates and the pressure drop rates are certified according to the UNI 8728 and prEN 12238 standards, by an independent and certified body, in compliance with the legislation in force on energy saving standards.

Size	Sizes (mm)				
	ø N	□ A	□ B	□ C	I
160	158	244	294	266x248	310
200	198	344	394	366x348	350
250	248	444	494	466x448	400
315	313	544	594	566x548	460